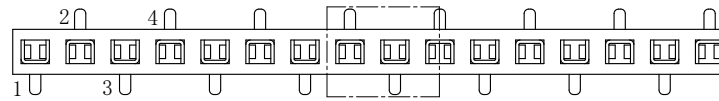


HSF

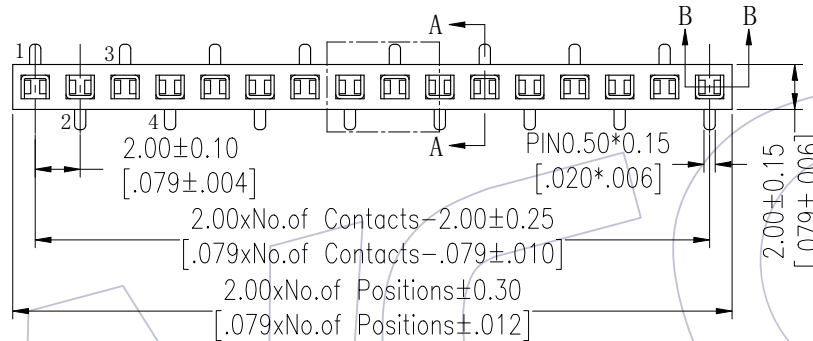
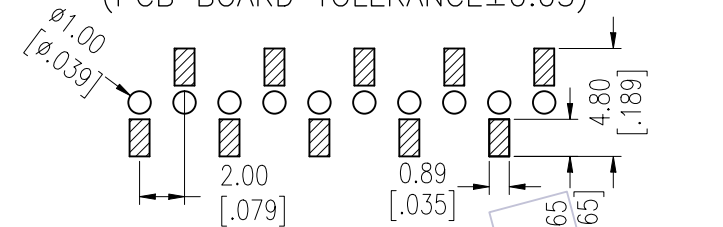
NOTES:
 Current Rating: 2.0AMP
 Contact Resistance: 20mΩ Max
 Withstand Voltage: 500V AC
 Insulation Resistance: 1000MΩ Min
 Operation Temperature: -40°C to +105°C

Contact Material: Phosphor Bronze
 Contact plating: Au over Ni
 Insulator Material: PA9T+33%G.F UL94V-0

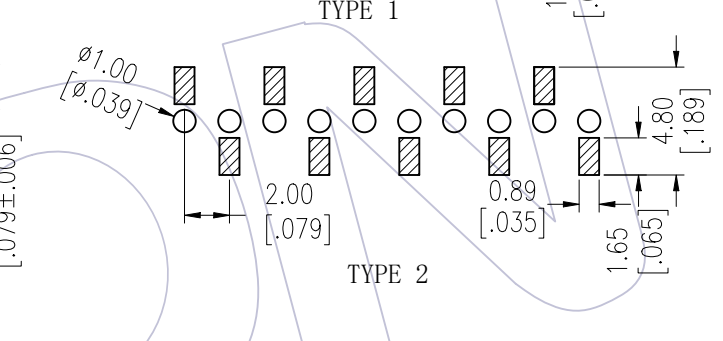
Recommended P.C.B Layout (Top Side)
 (PCB BOARD TOLERANCE ±0.05)



TYPE 1



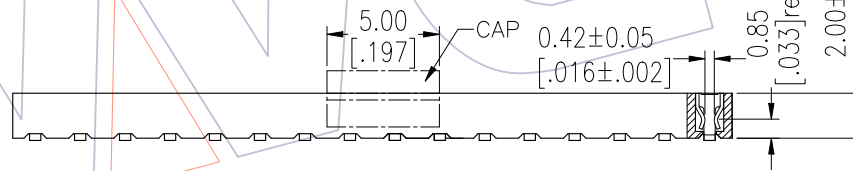
TYPE 2



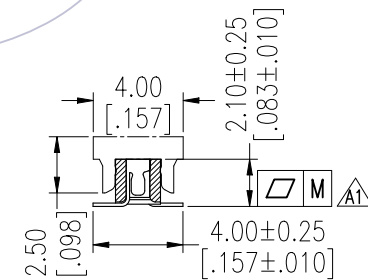
Ordering Information

2220T - 1 XX M XX CUN X X

No. of Pins per ROW: 02-40PIN
 Contact Plating: G0=Gold Flash, G3=10μ"Gold, G4=15μ"Gold, G5=30μ"Gold
 Packing: T=Tube, P=Tube+CAP, R=Tape&Reel+CAP
 Series No. 1=Type 1, 2=Type 2



SECTION B-B



SECTION A-A

Item	Pitch	Mating
Standard	2.00	1215/1220
Alternate		

Pin (Per Row)	2-15P	16-25P	26-40P
M	0.10	0.15	0.18

REV	DATE	MODIFICATION DESCRIPTION	CHANGE	OPERATION		DRAW XSR	DATE	SCALE	FIT	PART NO.
				X.X	±0.40					
A1	2023/02/14	Add Flatness & Add DIM.	-----	X.XX	±0.25	CHECK	2023/02/14	UNIT	mm	2220T-1XXMXXCUNXX
A0	2012/07/14	NEW	-----	X.XXX	±0.15	APPROVE	DATE	SHEET	1/1	TITLE: 2.0mm Female Header SINGLE ROW 180°SMT H=2.0
				Angle	± 3'		DATE	PROJ.		Customer NO.

WCON

Http: www.wcon.com

WCON-Dongguan WCON-Kunshan
 Tel: +86 769 85358920 Tel: +86 512 57468408
 Fax: +86 769 85358915 Fax: +86 512 57468468
 E-mail: sales@wcon.com E-mail: salesks@wcon.com