

HSF

NOTES:

1. Insulator material: PA9T+33%G.F, UL94 V-0;
2. Terminal material: Copper Alloy;
Terminal Plating: Au/Sn Plated Over Nickel ;
3. Rated Voltage: Power 600V;
4. Rated Current: Power 30A; $\Delta 1$
5. Contact Resistance:
Power 0.7m Ω Max; $\Delta 1$
6. Insulation Resistance: DC500V
Power 10000M Ω Min; $\Delta 1$
7. Insulation Withstand Voltage:
Power 2500VAC/1min; $\Delta 1$
8. Durability :200 cycling;
9. Operation Temperature: -20°C to +105°C;

P4FR A - XX XX X X A 1

No. Power:
01=1Pin
20=20Pin

Tail Options(DIP Type):
A=3.43mm
B=2.29mm
C=4.19mm

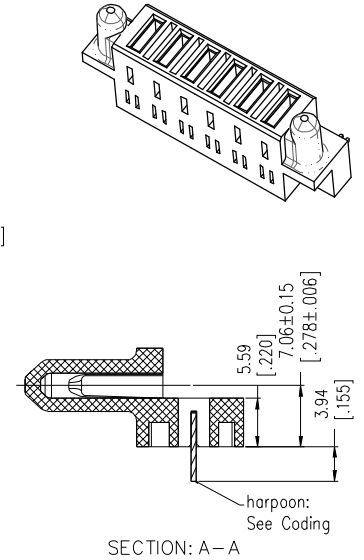
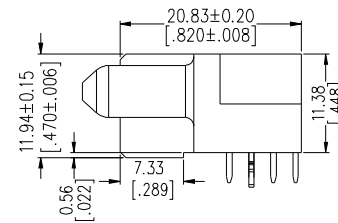
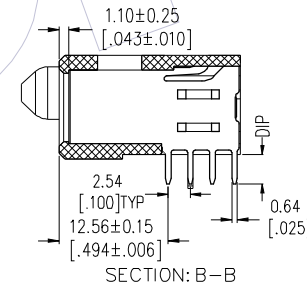
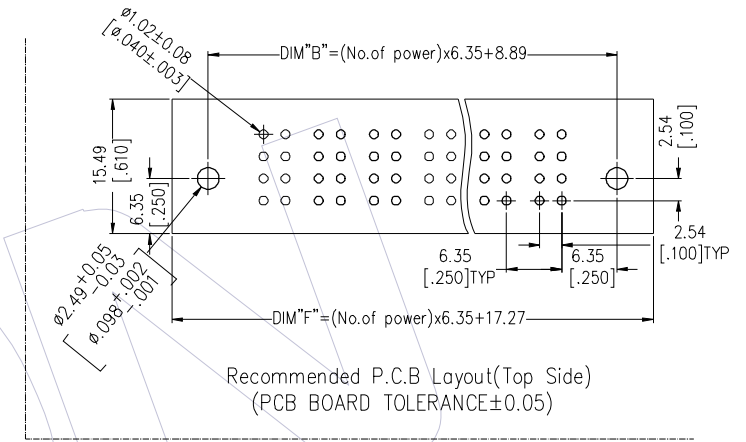
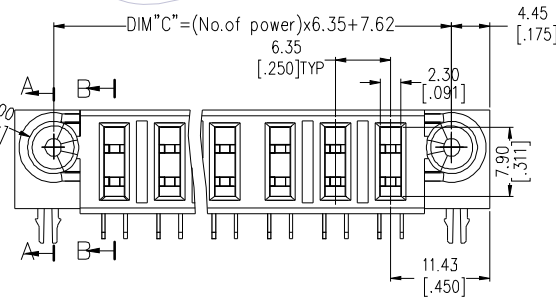
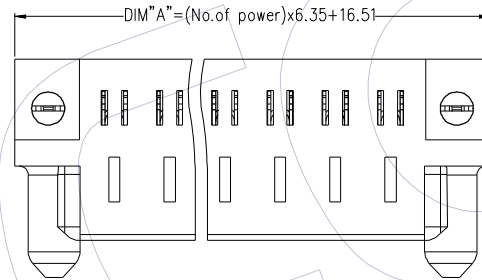
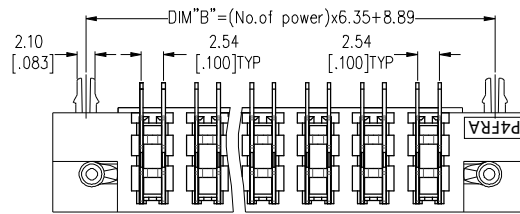
Packing:
A=Tray

Power Contact Plated:
S3=10u" Gold /Tin
S4=15u" Gold /Tin
S5=30u" Gold /Tin
w3=10u" Gold /Matte Tin
w4=15u" Gold /Matte Tin
w5=30u" Gold /Matte Tin

Fixed Mode:
M: W/T Lock
N: W/O Lock

Product Data Sheet

No.	P/N	No. Power	DIM "A"	DIM "B"	DIM "C"	DIM "F"
1	P4FRA-10XXXXA1	10	80.01	72.39	71.12	75.77
2	P4FRA-08XXXXA1	8	67.31	59.69	58.42	63.07
3	P4FRA-06XXXXA1	6	54.61	46.99	45.72	50.37
4	P4FRA-05XXXXA1	5	48.26	40.64	39.37	44.02
5	P4FRA-04XXXXA1	4	41.91	34.29	33.02	37.67
6	P4FRA-03XXXXA1	3	35.56	27.94	26.67	31.32
7	P4FRA-02XXXXA1	2	29.21	21.59	20.32	24.97



REV	DATE	MODIFICATION DESCRIPTION	CHANGE	OPERATION		DRAW PAN	DATE	SCALE	FIT	PART NO.
				x.x	± 0.40					
A1	2022/03/28	Modify Notes	—	x.xx	± 0.25	CHECK	2022/03/28	UNIT	mm	P4FRA-XXXXXA1
A0	2018/10/10	NEW	—	x.xxx	± 0.15	APPROVE	DATE	SIZE	inch	
				Angle	$\pm 3^\circ$		DATE	SHEET	1/1	TITLE:
				DIM	TOL			PROJ.	ϕ \perp	PSP Spacing A 90° DIP FEMALE (TYPE-4:Power)
										Customer NO.

WCON

Http: www.wcon.com

WCON-Dongguan Tel: +86 769 85358920 Fax: +86 769 85358915 E-mail: sales@wcon.com

WCON-Kunshan Tel: +86 512 57468408 Fax: +86 512 57468468 E-mail: salesks@wcon.com