

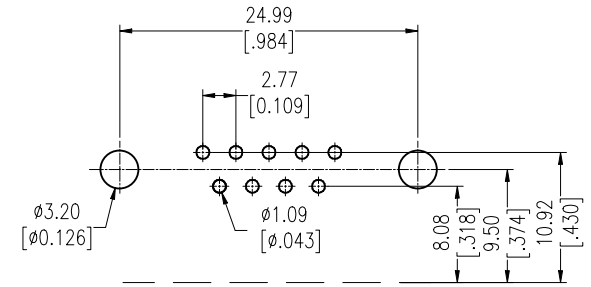
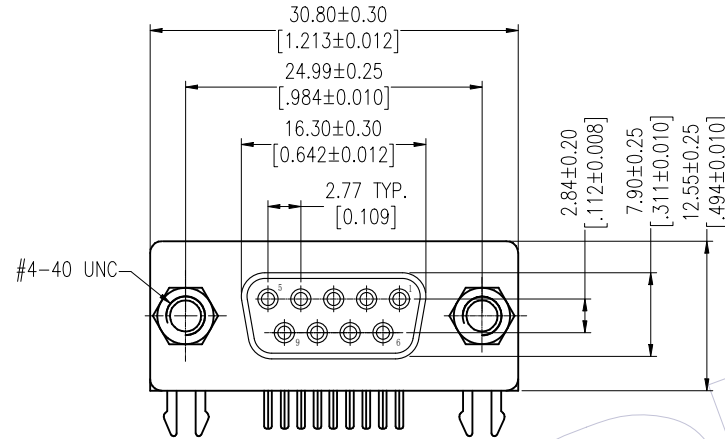
HSF

NOTES:

Current Rating:3.0A AMP
 Contact Resistance:25milliohm Max
 Withstand Voltage:500V AC/Minute
 Insulation Resistance:1000Megohm Min
 Operation Temperature:-55°C to +105°C

Housing Material:PBT+30%GF(UL94V-0)
 Contact Material:Copper alloy
 Contact plating:Au/Sn over Ni Plating
 Shell: Cold Roller Steel, Ni or Sn Plated
 Revit/Harpoon: Brass, Tin Over Ni Plated
 Screw: Brass, Ni Plated

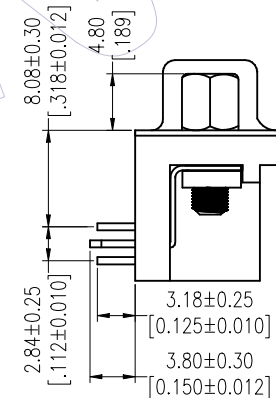
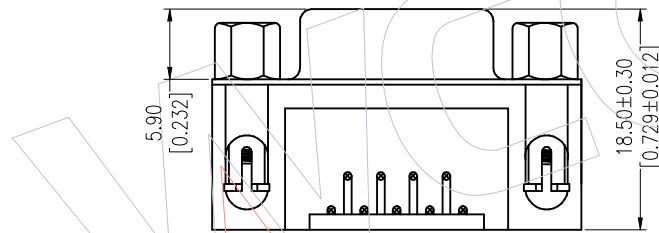
Recommended P. C. B Layout (Top Side)
 (PCB BOARD TOLERANCE ± 0.05)



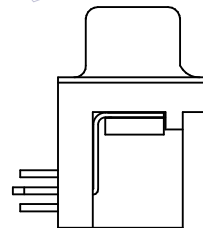
Ordering Information

6223- 09 F X N XX B 01

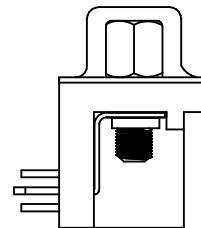
No. of Pins: 9P	Product Type W=With Revit With Screw M=With Revit Without Screw S=No Revit Lock With Screw H=With Revit With Screw (Don't lock)	Contact Plating: G0=Gold Flash G1=3u"Gold G2=5u"Gold G3=10u"Gold G4=15u"Gold G5=30u"Gold S0=Gold Flash/Tin S1=3u"Gold/Tin S2=5u"Gold/Tin S3=10u"Gold/Tin S4=15u"Gold/Tin S5=30u"Gold/Tin SN=Tin	Insulator Color: B= Black
--------------------	---	--	------------------------------



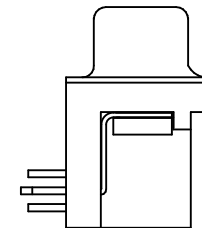
6223-09FWNXXX01



6223-09FMNXXX01




6223-09FSNXXX01



6223-09FHNXXX01



				OPERATION	DRAW	DATE	SCALE	FIT	PART NO.	 Http: www.wcon.com WCON-Dongguan Tel: +86 769 85358920 WCON-Kunshan Tel: +86 512 57468408 Fax: +86 769 85358915 Fax: +86 512 57468468 E-mail: sales@wcon.com E-mail: salesks@wcon.com
				X.X ±0.40	Allen	2014/02/28	UNIT	mm	6223-09FXNXXB01	
				X.XX ±0.25	CHECK	DATE	SIZE	A4		
A0	2014/02/28	NEW		X.XXX ±0.15	APPROVE	DATE	SHEET	1/1	TITLE: D-SUB FEMALE CONNECTOR 9P 8.08 FOOTPRINT RIGHT ANGLE TYPE	
REV	DATE	MODIFICATION DESCRIPTION	CHANGE	Angle ± 3° DIM TOL			PROJ.		Customer NO.	