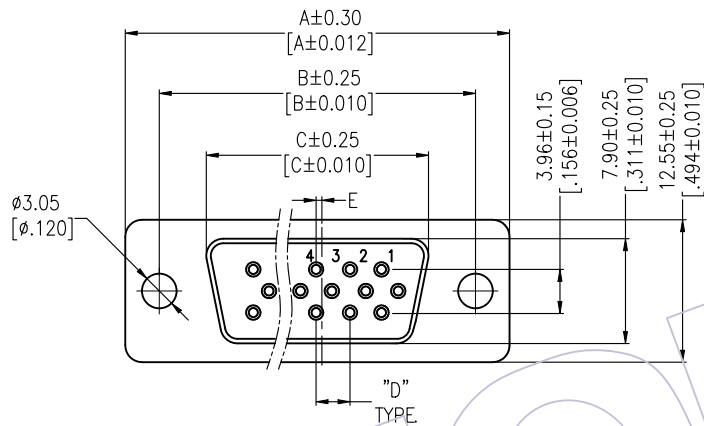


HSF

NOTES:

Withstand Voltage: 500V AC/Minute
 Insulation Resistance: 1000MΩ Min
 Operation Temperature: -55°C to +105°C

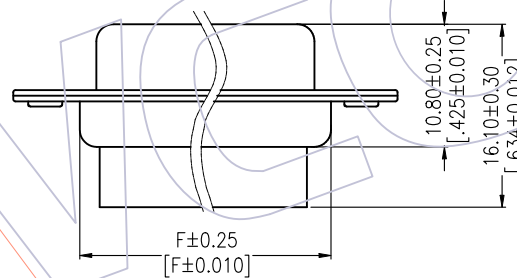
Insulator Material: PBT+30%G.F UL94V-0
 Shell: Cold Roller Steel, Sn Or Ni Plated
 Nut: Brass, Sn over Ni Plated



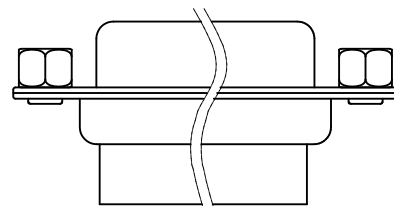
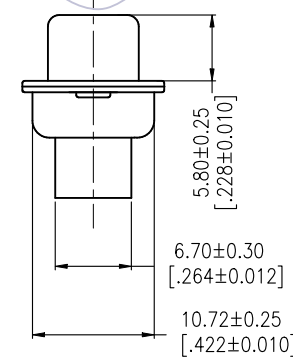
Ordering Information

6211-XX F X 00 X 01

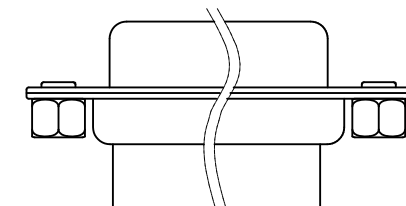
No. of Pins: 15, 26, 44, 62P
 Type: B=With Back Nut, F=With Front Nut, N=Without Nut
 Insulator Color: B:Black, U:Blue



6211-XXFN00X01



6211-XXFF00X01



6211-XXFB00X01

No. of Positions	DIM "A"	DIM "B"	DIM "C"	DIM "D"	DIM "E"	DIM "F"
15	30.81	24.99	16.33	2.29	0.25	19.10
26	39.14	33.32	24.66	2.29	0.51	27.75
44	53.04	47.04	38.38	2.29	0.51	41.30
62	69.32	63.50	54.84	2.41	0.58	57.40

REV	DATE	MODIFICATION DESCRIPTION	CHANGE	OPERATION	DRAW	DATE	SCALE	FIT	PART NO.
A1	2014/05/28	Modify 6211-XXFXXXB01 to 6211-XXFX00X01	△	X.X ±0.40	Allen	2014/05/28	UNIT mm		6211-XXFX00X01△
A0	2012/12/03	NEW	-----	X.XX ±0.25	CHECK	DATE	SIZE A4		TITLE: D-SUB FEMALE THREE ROW CRIMP TYPE
				X.XXX ±0.15	APPROVE	DATE	SHEET 1/1		Customer NO.
				Angle ± 3'			PROJ.		
				DIM TOL					

WCON

Http: www.wcon.com

WCON-Dongguan Tel: +86 769 85358920
 WCON-Kunshan Tel: +86 512 57468408
 Fax: +86 769 85358915
 Fax: +86 512 57468468
 E-mail: sales@wcon.com
 E-mail: salesks@wcon.com