

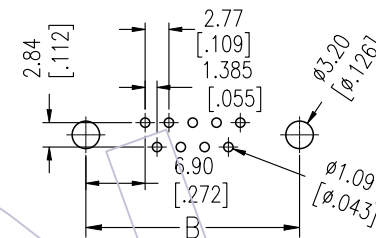
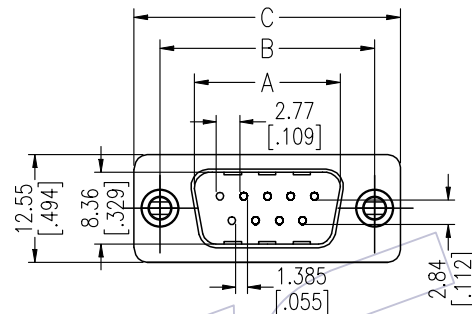
HSF

NOTES:

Current Rating: 3.0AMP
 Contact Resistance: 20mΩ Max
 Withstand Voltage: 500V AC/Minute
 Insulation Resistance: 1000MΩ Min
 Operation Temperature: -55°C to +105°C

Contact Material: Brass
 Contact plating: Au Or Sn over Ni
 Insulator Material: PBT+30%G.F UL94V-0
 Shell: Cold Roller Steel, Ni Or Sn Plated

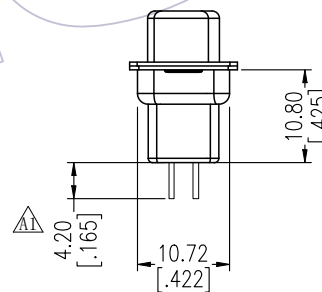
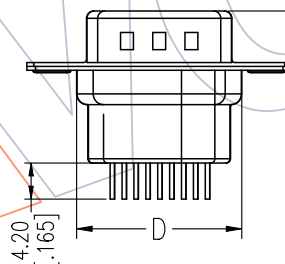
Recommended P.C.B Layout(Top Side)
 (PCB BOARD TOLERANCE±0.05)



Ordering Information

6222A-XX M N XX B 01

No. of Pins	Type	Contact Plating	Insulator Color
09,15,25,37P	N=Without Fork Without Nut	G0=Gold Flash S0=Gold Flash/Tin S3=10u"Gold/Tin S4=15u"Gold/Tin S5=30u"Gold/Tin SN=Tin	B:Black



No. of Positions	DIM "A"	DIM "B"	DIM "C"	DIM "D"
09	16.92	24.99	30.81	19.28
15	25.25	33.32	39.14	27.65
25	38.96	47.04	53.04	41.30
37	55.42	63.50	69.32	57.44

REV	DATE	MODIFICATION DESCRIPTION	CHANGE	OPERATION	DRAW Lk	DATE	SCALE	FIT	PART NO.
A1	2022/09/09	Modify: 4.60 → 4.20	-----	x.x ±0.40	Lk	2022/09/09	UNIT mm		6222A-XXMXXXB01
A0	2012/12/04	NEW	-----	x.xx ±0.25	CHECK	DATE	SIZE A4		TITLE:
				x.xxx ±0.15			SHEET 1/1		D-SUB MALE DUAL ROW 180°DIP
				Angle ± 3'	APPROVE	DATE	PROJ.		Customer NO.
				DIM TOL					

WCON

Http: www.wcon.com

WCON-Dongguan	WCON-Kunshan
Tel: +86 769 85358920	Tel: +86 512 57468408
Fax: +86 769 85358915	Fax: +86 512 57468468
E-mail: sales@wcon.com	E-mail: salesks@wcon.com