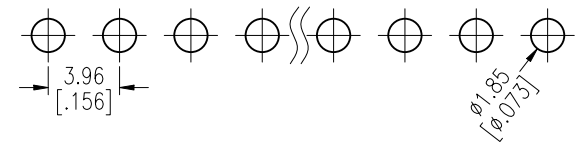
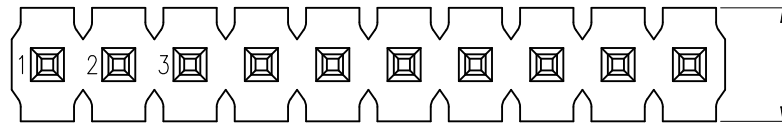


HSF

Recommended P.C.B Layout (Top Side)
(PCB BOARD TOLERANCE±0.05)

NOTES:
Rated Current:7.0AMP.
Contact Resistance:20mΩ Max.
Withstand Voltage:1000V AC/DC
Insulation Resistance:1000MΩ Min.
Operation Temperature:-40°C to +105°C

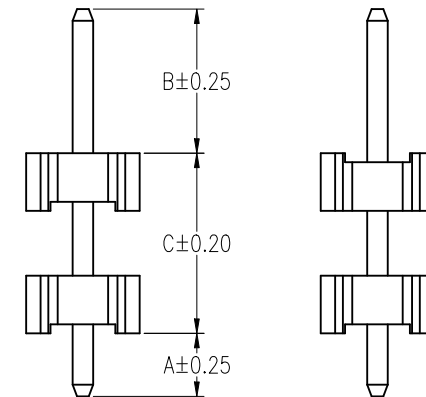
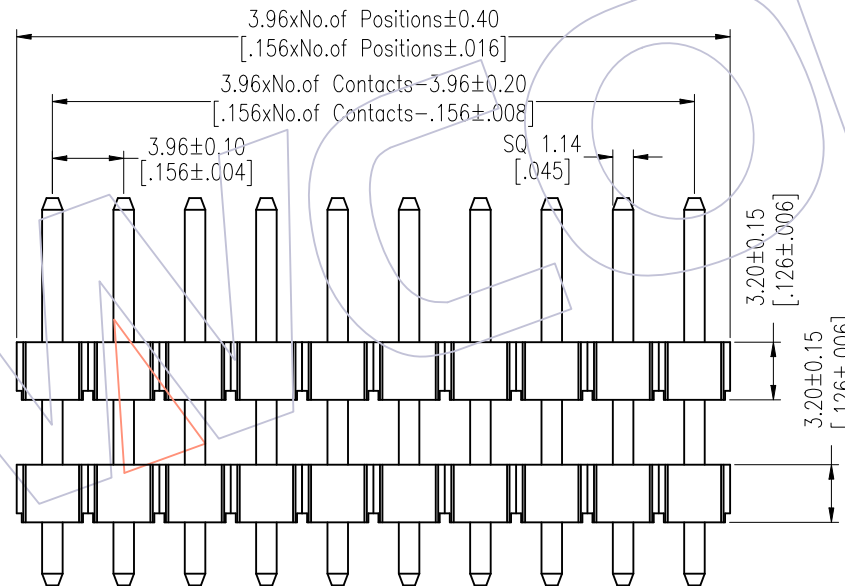
Contact Material:Brass
Contact Plating:Sn Over Ni
Insulator Material:LCP+30%G.F UL94V-0 BK



Ordering Information

1832-21 XX XX S XXX D 0 XX

No. of Pins Contact Plating Pin Length Insulator Packing Series No.
02~20 SN=Tin L=A+B+C D=LCP 0=PE Bag 01~99
SM=Matte Tin



TYPE-1

TYPE-2

Item	Pin Length	A	B	C	Mating
Standard	--	3.50	8.00	--	2889
Alternate					

REV	DATE	MODIFICATION DESCRIPTION	CHANGE	OPERATION	DRAW	DATE	SCALE	Fit	PART NO.
A1	2018/01/23	MODIFY PART NO.	-----	X.X ±0.40	William Chen	2018/01/23	UNIT	mm [inch]	1832-21XXXXSXXXDXXX
A0	2012/06/25	NEW	-----	X.XX ±0.25	CHECK	DATE	SIZE	A4	TITLE: 3.96 Pin Header, SINGLE ROW, S/T, DOUBLE PLASTIC, H=3.2
				X.XXX ±0.15	APPROVE	DATE	SHEET	1/1	Customer NO.
				Angle ± 3'			PROJ.		
				DIM TOL					

WCON

Http: www.wcon.com

WCON-Dongguan Tel: +86 769 85358920 Fax: +86 769 85358915 E-mail: sales@wcon.com
WCON-Kunshan Tel: +86 512 57468408 Fax: +86 512 57468468 E-mail: salesks@wcon.com