

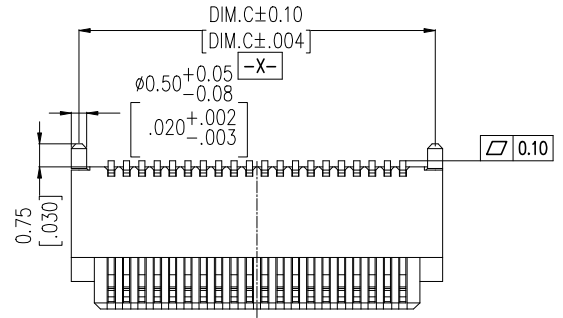
NOTES:  
 Current Rating: 0.5AMP  
 Voltage Rating: 50V AC/DC  
 Contact Resistance: 30mΩ max  
 Withstand Voltage: 100V AC for 1minute  
 Insulation Resistance: 500MΩ min  
 Operation Temperature: -25℃ to +105℃

Housing Material: PA9T(UL94V-0), NATURAL  
 Contact Material: Copper alloy  
 Fixing Material: Copper alloy  
 Contact plating: Au over Ni

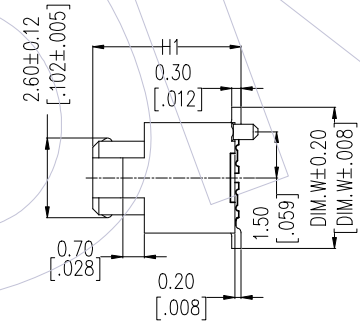
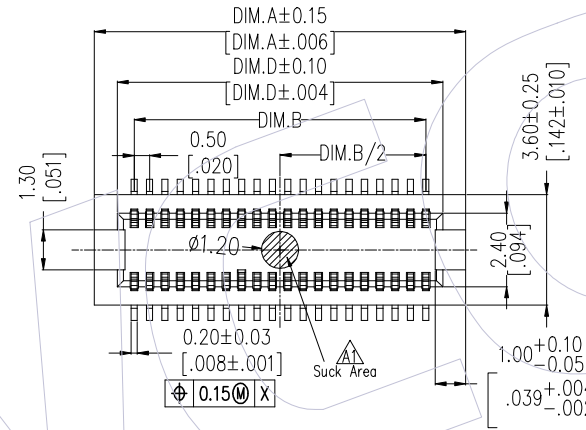
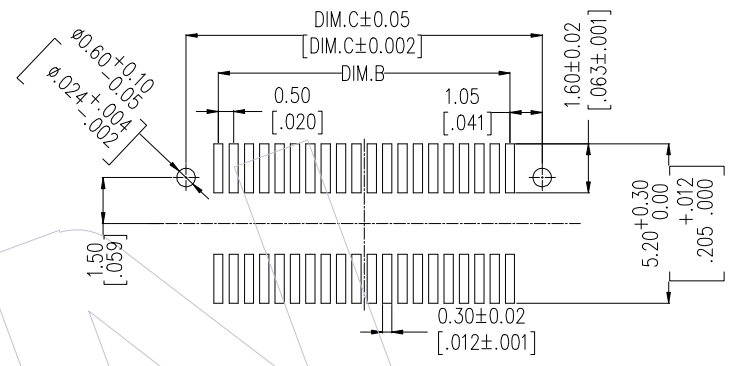
### Ordering Information

3622-S XXX - XXX XX X 01

No. of Pins	Housing High	Contact Plating	T=Tube P=Tube+CAP R=Tape&Reel+CAP
14P 50P	022=2.20	G1=3u"Gold	
20P 60P	027=2.70	G3=10u"Gold	
24P 70P	048=4.80	G4=15u"Gold	
30P 80P		G5=30u"Gold	
32P 90P		H5=30u"Gold(Contact area, 3u"Gold other area)	
36P 100P			
40P			

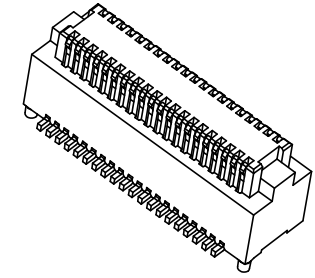
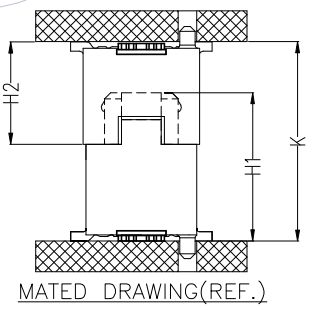
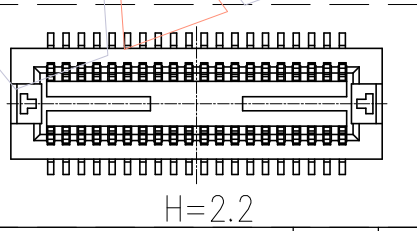


Recommended P.C.B Layout (Top Side)  
 (PCB BOARD TOLERANCE±0.05)



PART NO.	DIM.H1	DIM.W
3622-SXXX-022XXX01	2.20	4.60
3622-SXXX-027XXX01	2.73	4.60
3622-SXXX-048XXX01	4.80	4.60

ASS'Y HEIGHT(K)	PLUG(H2)	SOCKET(H1)
3.00	2.33	2.20
3.50	2.80	
4.00	2.80	2.73
4.50	3.33	
5.00	3.83	
5.50	4.33	
6.00	4.83	4.80
6.50	3.33	
7.00	3.83	
7.50	4.33	
8.00	4.83	



PIN	DIM.A	DIM.B	DIM.C	DIM.D
14	5.60	3.00	5.10	4.10
20	7.10	4.50	6.60	5.60
24	8.10	5.50	7.60	6.60
30	9.60	7.00	9.10	8.10
32	10.10	7.50	9.60	8.60
36	11.10	8.50	10.60	9.60
40	12.10	9.50	11.60	10.60
50	14.60	12.00	14.10	13.10
60	17.10	14.50	16.60	15.60
70	19.60	17.00	19.10	18.10
80	22.10	19.50	21.60	20.60
90	24.60	22.00	24.10	23.10
100	27.10	24.50	26.60	25.60

REV	DATE	MODIFICATION DESCRIPTION	CHANGE	OPERATION	DRAW	DATE	SCALE	Fit	PART NO.
A2	2021/07/31	ADD 70/80/90/100P	XSR	x.x ±0.40	XSR	2021/07/31	UNIT	mm	3622-SXXX-XXXXXX01
A1	2021/05/27	ADD Suck Area	XSR	x.xx ±0.25	CHECK	DATE	SIZE	A4	TITLE: 0.50mm BTB FEMALE SMT TYPE W/O LATCH
A0	2018/03/09	NEW	-----	x.xxx ±0.15	APPROVE	DATE	SHEET	1/1	Customer NO.
				Angle ± 3°			PROJ.		
				DIM TOL					

**WCON**  
 Http: www.wcon.com

WCON-Dongguan  
 Tel: +86 769 85358920  
 Fax: +86 769 85358915  
 E-mail: sales@wcon.com

WCON-Kunshan  
 Tel: +86 512 57468408  
 Fax: +86 512 57468468  
 E-mail: salesks@wcon.com