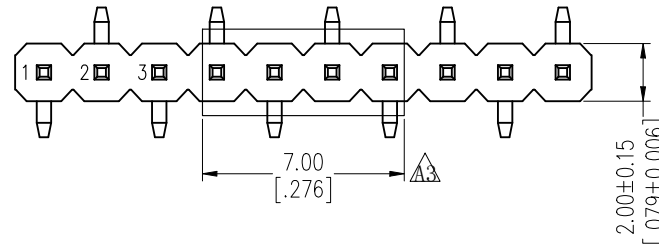


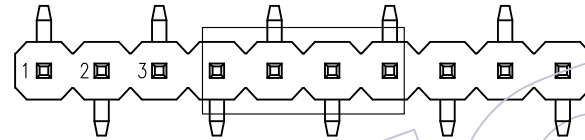
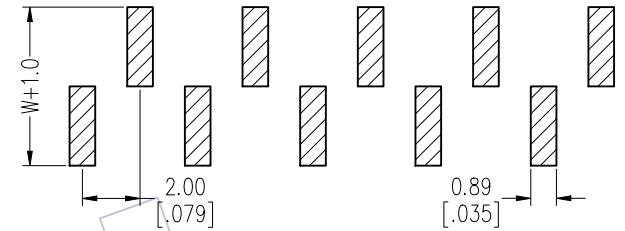
NOTES:
 Rated Current: 2.0AMP.
 Contact Resistance: 20mΩ Max.
 Withstand Voltage: 500V AC/DC
 Insulation Resistance: 1000MΩ Min.
 Operation Temperature: -40°C to +125°C(GOLD)
 -40°C to +105°C(TIN) Δ

Contact Material: Brass
 Contact Plating: Au or Sn Over Ni
 Insulator Material: PA9T+33%G.F UL94V-0 BK

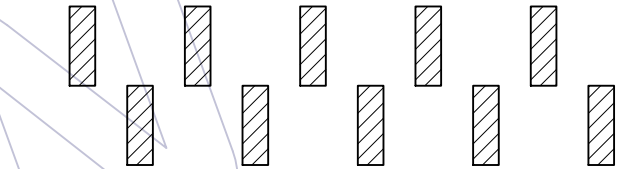
Recommended P.C.B Layout (Top Side)
 (PCB BOARD TOLERANCE ± 0.05)



TYPE 1



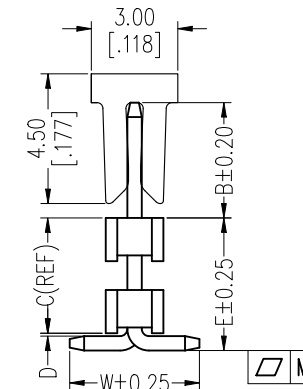
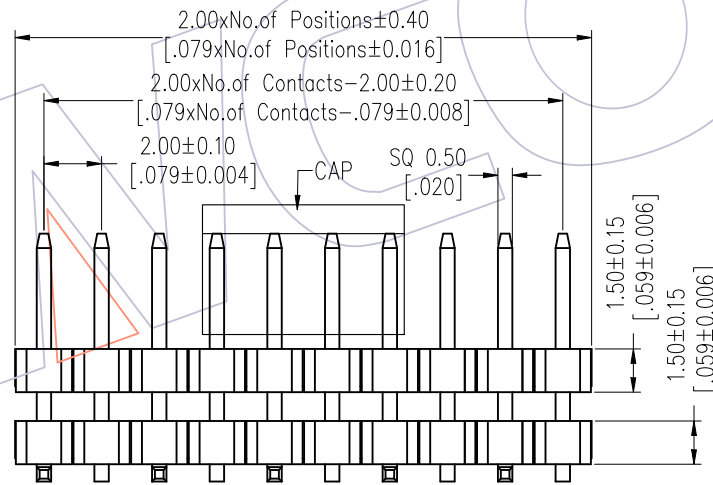
TYPE 2



Ordering Information

1215-21 XX XX M XXX C R XX Δ

No. of Pins	Contact Plating	Pin Length	Insulator Material	Packing	Series No.
02-40	G0=Gold Flash G3=10u"Gold G4=15u"Gold G5=30u"Gold S0=Gold Flash/Tin S3=10u"Gold/Tin S4=15u"Gold/Tin S5=30u"Gold/Tin SN=Tin SM=Matte Tin	L=B+C+D+ $\frac{W}{2}$ Standard:	C=PA9T	T=Tube P=Tube+CAP R=Iape&Reel+CAP	01-99



Item	Pin Length	W	D	B	E	Mating
Standard	---	4.50	0.10	4.00	---	2240 2243 2263 2272
Alternate						

PIN	2-15P	16-25P	26-40P	TITLE	PART NO.	SPEC. Δ
M	0.10	0.15	0.20	TYPE 1	1215-21XXXXMXXXCRO1	DUAL/ODD PINS
				TYPE 2	1215-21XXXXMXXXCRO2	DUAL PINS

REV	DATE	MODIFICATION DESCRIPTION	CHANGE	OPERATION	DRAW	DATE	SCALE	Fit	PART NO.
A3	2019/07/20	Modify the CAP	Δ	x.X	<i>Diag</i>	2019/07/20	UNIT	mm	1215-21XXXXMXXXCRRX Δ
A2	2018/09/07	Modify	Δ	x.XX	CHECK	DATE	SIZE	A4	TITLE: PH2.00 SINGLE ROW DOUBLE PLASTIC SMT H=1.5
A1	2018/01/18	Modify P/N	Δ	x.XXX	APPROVE	DATE	SHEET	1/1	Customer NO.
A0	2012/04/18	NEW	-----	Angle			PROJ.		
				DIM	TOL				

WCON
 Http: www.wcon.com
 WCON-Dongguan Tel: +86 769 85358920
 WCON-Kunshan Tel: +86 512 57468408
 Fax: +86 769 85358915
 Fax: +86 512 57468468
 E-mail: sales@wcon.com
 E-mail: salesks@wcon.com