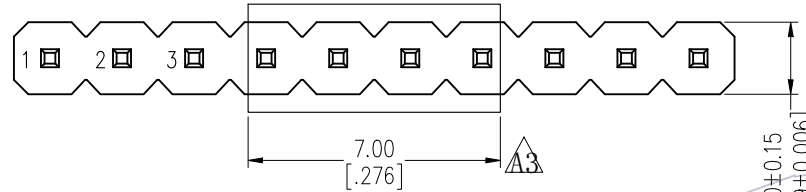
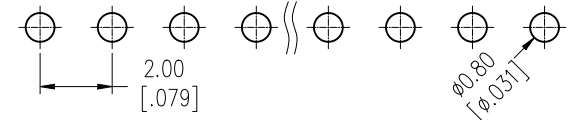


NOTES:
 Rated Current: 2.0AMP.
 Contact Resistance: 20mΩ Max.
 Withstand Voltage: 500V AC/DC
 Insulation Resistance: 1000MΩ Min.
 Operation Temperature: -40°C to +125°C(GOLD)
 -40°C to +105°C(TIN) $\Delta 3$

Contact Material: Brass
 Contact Plating: Au or Sn Over Ni
 Insulator Material: PA9T+33%G.F UL94V-0 BK

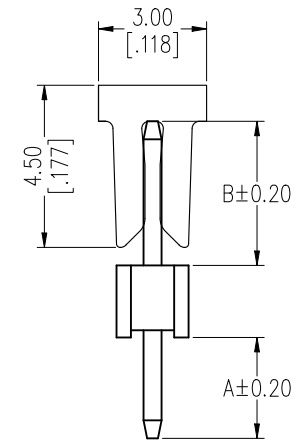
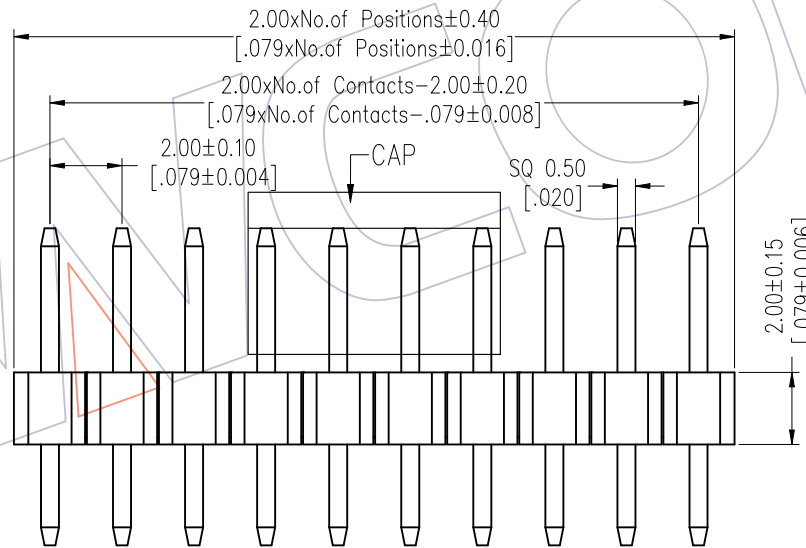
Recommended P.C.B Layout (Top Side)
 (PCB BOARD TOLERANCE ± 0.05)



Ordering Information

1220-11 XX XX S XXX C X XX $\Delta 1$

No. of Pins	Contact Plating	Pin Length L=A+B+2.0	Insulator Material	Packing 0=PE Bag	Series No. 01-99
02-40	G0=Gold Flash G3=10u"Gold G4=15u"Gold G5=30u"Gold	Standard: 068=6.8 078=7.8 088=8.8	C=PA9T	T=Tube R=Tape&Reel+CAP	
	S0=Gold Flash/Tin S3=10u"Gold/Tin S4=15u"Gold/Tin S5=30u"Gold/Tin				
	SN=Tin SM=Matte Tin				



Item	Pin Length	A	B	Mating
Standard	6.80	2.80	2.00	2220T 2221 2227T 2228
	7.80	2.80	3.00	2235
	8.80	2.80	4.00	2240 2243 2263 2272
	5.80	1.20	2.60	
	7.50	3.00	2.50	
	8.00	2.50	3.50	
	8.70	2.70	4.00	
	9.00	3.00	4.00	
	9.50	2.50	5.00	
	10.00	3.00	5.00	
	10.80	2.80	6.00	
	11.00	3.00	6.00	
	12.00	3.00	7.00	
	12.20	2.60	7.60	

REV	DATE	MODIFICATION DESCRIPTION	CHANGE	OPERATION	DRAW	DATE	SCALE	Fit	PART NO.
A3	2019/07/20	Modify the CAP	$\Delta 3$	x.x ± 0.40	Draw	2019/07/20	UNIT	mm	1220-11XXXXSXXXCXXX $\Delta 1$
A2	2018/06/25	Add the CAP	$\Delta 2$	x.xx ± 0.25	CHECK	DATE	SIZE	A4	TITLE:
A1	2018/01/18	Modify P/N	$\Delta 1$	x.xxx ± 0.15	APPROVE	DATE	SHEET	1/1	PH2.0 SINGLE ROW 180°H=2.0
A0	2012/04/26	NEW	-----	Angle $\pm 3^\circ$			PROJ.		Customer NO.
				DIM TOL					

WCON
 Http: www.wcon.com
 WCON-Dongguan Tel: +86 769 85358920
 WCON-Kunshan Tel: +86 512 57468408
 Fax: +86 769 85358915 Fax: +86 512 57468468
 E-mail: sales@wcon.com E-mail: salesks@wcon.com