

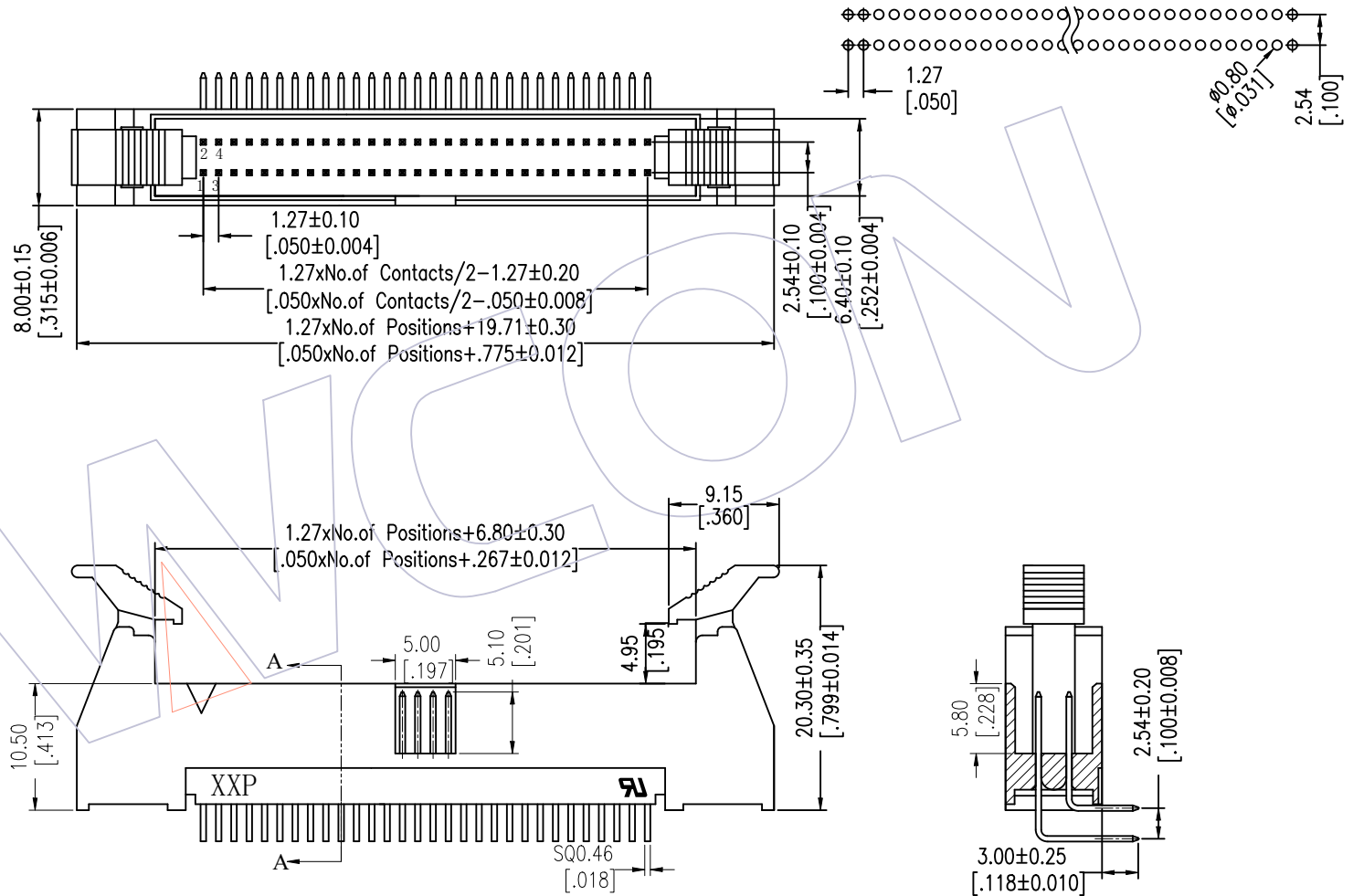
# HSF

**NOTES:**

Current Rating: 1.0AMP  
 Contact Resistance:  $20m\Omega$  Max  
 Withstand Voltage: 500V AC/DC  
 Insulation Resistance:  $1000M\Omega$  Min  
 Operation Temperature:  $-40^{\circ}C$  to  $+105^{\circ}C$

Contact Material: Brass  
 Contact plating: Au Or Sn over Ni  
 Insulator Material: PA9T+30%G.F UL94V-0

Recommended P.C.B Layout(Top Side)  
 (PCB BOARD TOLERANCE  $\pm 0.05$ )



## Ordering Information

### 3240- XX R XX B S X 1

No. of Pins	Contact Plating	Color Insulator	Packing
10 34	G0=Gold Flash	B=Black	T=Tube
12 40	G3=10u"Gold	U=Blue	
14 44	G4=15u"Gold	W=White	
16 50	G5=30u"Gold		
20 60	S0=Gold Flash/Tin		
24 64	S3=10u"Gold/Tin		
26 80	S4=15u"Gold/Tin		
30 100	S5=30u"Gold/Tin		
32	SN=Tin		

Item	Pitch	Mating
Standard	1.27X2.54	5242
Alternate		

OPERATION	DRAW	DATE	SCALE	FIT	PART NO.
x.x $\pm 0.40$	JYHuang	2012/10/05	UNIT	mm	3240-XXRXXBSX1
x.xx $\pm 0.25$	CHECK	DATE	SIZE	A4	TITLE: 1.27*2.54 EJECTOR HEADER 90°DIP
x.xxx $\pm 0.15$	APPROVE	DATE	SHEET	1/1	Customer NO.
Angle $\pm 3'$			PROJ.		
DIM TOL					

**WCON**  
 Http: www.wcon.com

WCON-Dongguan      WCON-Kunshan  
 Tel: +86 769 85358920      Tel: +86 512 57468408  
 Fax: +86 769 85358915      Fax: +86 512 57468468  
 E-mail: sales@wcon.com      E-mail: salesks@wcon.com