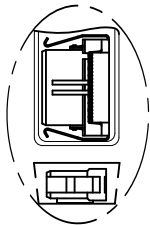
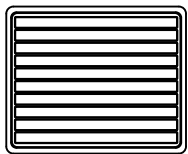


HSF



包装示意图



No. 1

产品装入真空盒内
真空盒规格:SB-22AB (310*260*7.5MM)



No. 2

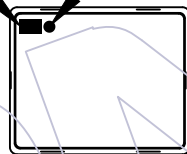
盖上盒盖并四边六处钉上订书针



数量标签

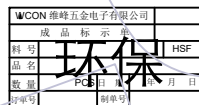


ROHS标签



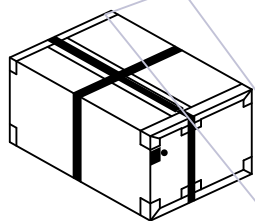
No. 3

贴标签于真空盒左上角



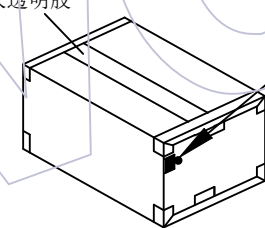
贴外箱标签及ROHS标签

大透明胶



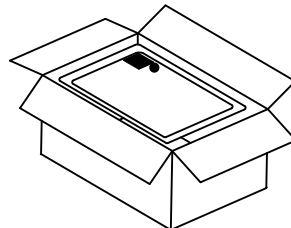
No. 6

打包装带



No. 5

封箱及贴标签于纸箱侧面的左上角



No. 4

真空盒装入纸箱 (25盒/箱)
纸箱规格:CTN-69 (双坑A=A, 33*28*21CM)

1.27*2.54IDC 带卡钩

规格	真空盒装数量	每箱装总数量	规格	真空盒装数量	每箱装总数量
10P	252	6300	28P	132	3600
12P	228	5700	30P	120	3000
14P	204	5100	34P	108	2700
16P	192	4800	36P	108	2700
18P	180	4500	40P	96	2400
20P	168	4200	44P	96	2400
22P	156	3900	50P	84	2100
24P	144	3600	60P	72	1800
26P	144	3600	64P	60	1500

说明:

1. 产品如图所示型态放入真空盒
2. 注意各标签样式、位置及方向的一致性;
3. 打外箱包装带时需注意, 打为十字型.

变更记事

						零件图	颜色		SCALE	1:1
						X.	COLOR		UNIT	mm
						X.X	材质		SIZE	A4
						X.XX	DESING	马云青	SHEET	1/1
						X.XXX	审核		PROJ.	
						Angle	CHECK			
						X.	核准			
						DIM	APPROVE			
						TOL				
A0	11/01/12		NEW							
版次	日期		变更说明	变更	核准					
REV	DATE		MODIFICATION DESCRIPTION	CHANGE	APPROVE					

WCON

WCON Hardware Electronics Co., Ltd

料号 PART NO. 5243-XXYPXXBXOX

品名 TITLE: PH1.27x2.54 IDC WITH LATCH