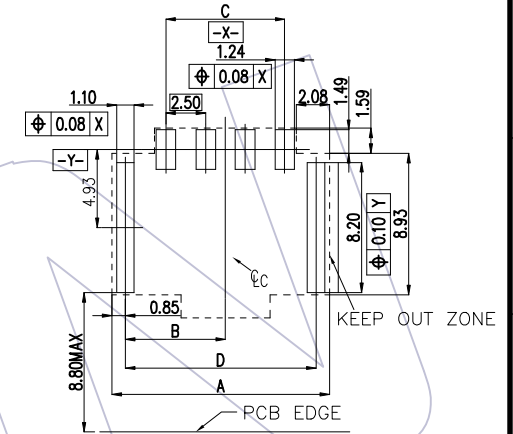
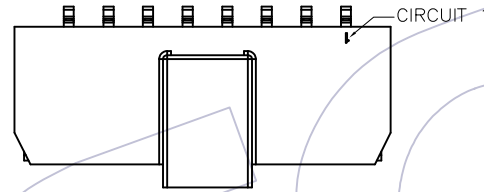
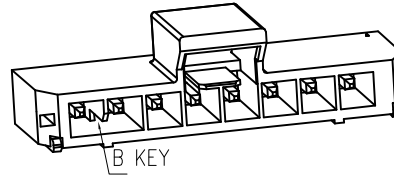
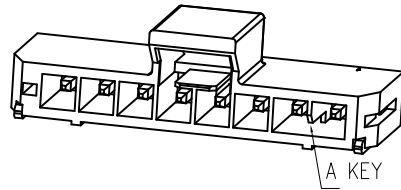


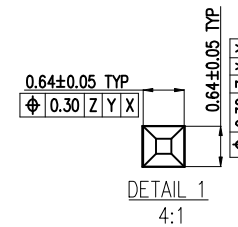
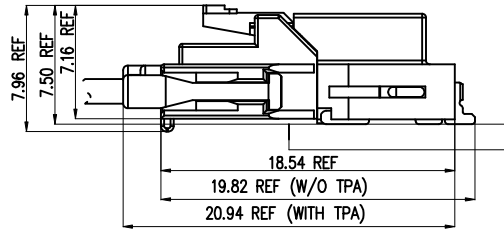
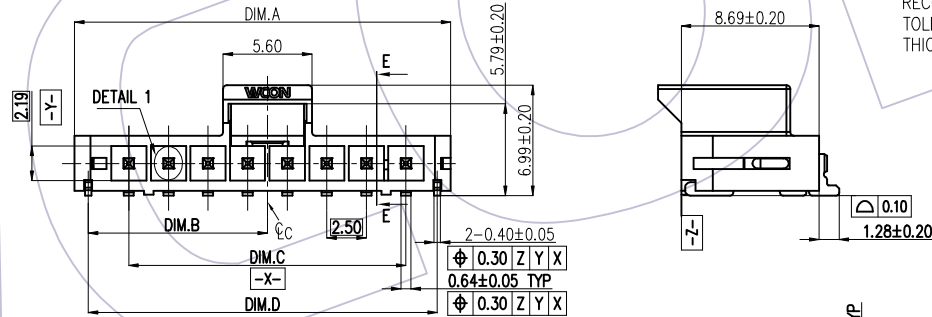
HSF PRELIMINARY

NOTES:

1. Rated Current: See Table 1;
2. Contact Resistance: Initial: 10mΩ Max.
Final: 20mΩ Max;
3. Withstand Voltage: 1500V AC;
4. Insulation Resistance: 1000MΩ Min;
5. Operation Temperature: -40°C to +125°C;
6. Contact Material: copper alloy;
7. Contact Plating:
Under Plating Nickel 50-80u" ;
Solder Area: Bright Tin 100-200u" Min;
Contact Area: Au Or Sn
8. Insulator Body Material: LCP+30%G.F UL94V-0 ;
9. Recommended process:
Wave Solder, Peak temperature: 260±5°C.
10. RoHS COMPLIANT.



RECOMMENDED PCB LAYOUT (CONNECTOR SIDE VIEW)
TOLERANCE ±0.05
THICKNESS: 1.60 MM



Ordering Information

WF 2058-1 WZ H XX XX X X 1
 Row 1=Single
 90° SMT
 High Temperature Plastic
 NO. of PIN
 02=2 Pin

 08=8 Pin
 Package A=Tray
 Housing Color
 T=Natural
 B=Black
 Contact Plating
 S1=3u" Gold/Tin
 S4=15u" Gold/Tin
 S5=30u" Gold/Tin
 B=Blank=Bright Tin

Pin	DIM.			
	DIM.A	DIM.B	DIM.C	DIM.D
1*2	8.74	3.82	2.50	7.04
1*3	11.24	5.07	5.00	9.54
1*4	13.74	6.32	7.50	12.04
1*5	16.24	7.57	10.00	14.54
1*6	18.74	8.82	12.50	17.04
1*7	21.24	10.07	15.00	19.54
1*8	23.74	11.32	17.50	22.04

OPERATION	DRAW	DATE	SCALE	Fit	PART NO.
x. ±0.60	Dean.Liu	2023/05/11	UNIT	mm [inch]	WF2508-1WZHXXXXX1
x.x ±0.40	CHECK	DATE	SIZE	A4	TITLE:
x.xx ±0.25	APPROVE	DATE	SHEET	1/2	2.5*2.5mm Wafer single row, car connector 90° SMT Socket
Angle ± 3°			PROJ.	Customer NO.	
DIM TOL					



Http: www.wcon.com

WCON-Dongguan
Tel: +86 769 85358920
Fax: +86 769 85358915
E-mail: sales@wcon.com

WCON-Kunshan
Tel: +86 512 57468408
Fax: +86 512 57468468
E-mail: salesks@wcon.com

REV	DATE	MODIFICATION DESCRIPTION	CHANGE
A0	2023/05/11	NEW	