

# HSF

**NOTES:**

Rated Current: 1.5AMP.(20°C, 1\*2P-1\*15P)  
 1.0AMP.(20°C, 1\*16P-1\*50P)  $\triangle A2$

Contact Resistance: 20m $\Omega$  Max.  
 Withstand Voltage: 500V AC/DC  
 Insulation Resistance: 1000M $\Omega$  Min.

Operation Temperature: -40°C to +125°C (Gold Plating)  
 -40°C to +105°C (Tin Plating)  $\triangle A2$

Contact Material: Copper Alloy  
 Contact Plating: Au or Sn Over 30u" Min Ni  
 Insulator Material: PA9T+G.F UL94V-0 BK  $\triangle A2$

## Ordering Information

1325-1 1 XX XX R XXX C X XX

Plastic Layer  
 Plastic Row  
 No. of Pins  
 Per Row: 02-50  
 Contact Plating  
 G0=Gold Flash  
 G3=10u"Au, BG3=8u"PdNi+2u"Au  
 G4=15u"Au, BG4=13u"PdNi+2u"Au  
 G5=30u"Au, BG5=28u"PdNi+2u"Au  
 S0=Gold Flash/Tin  
 S3=10u"Au/Sn, P3=8u"PdNi+2u"Au/Sn  
 S4=15u"Au/Sn, P4=13u"PdNi+2u"Au/Sn  
 S5=30u"Au/Sn, P5=28u"PdNi+2u"Au/Sn  
 SN=Bright Tin  
 SM=Matte Tin

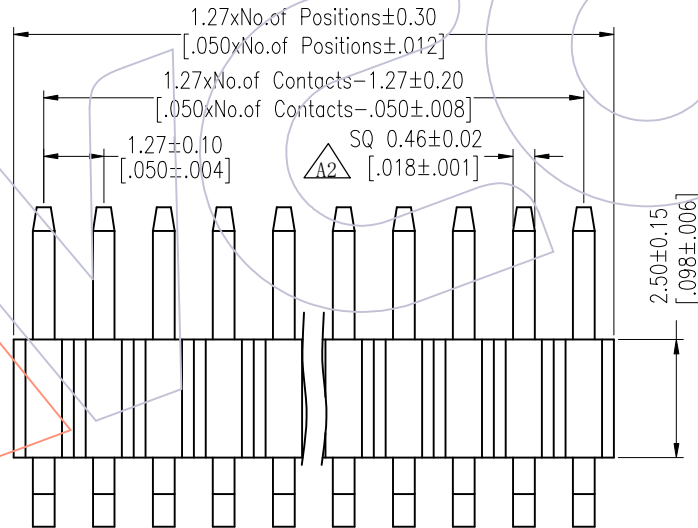
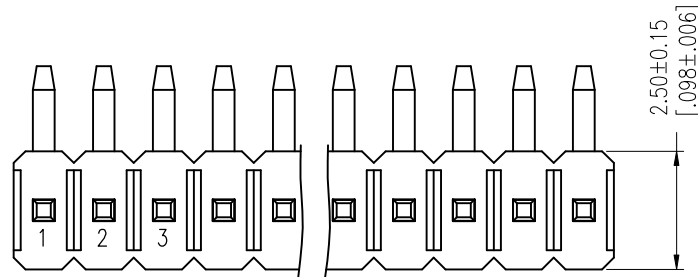
Series No.  
 01-99  
 Packing  
 A=Tray

Insulator Material  
 C=PA9T(Standard)

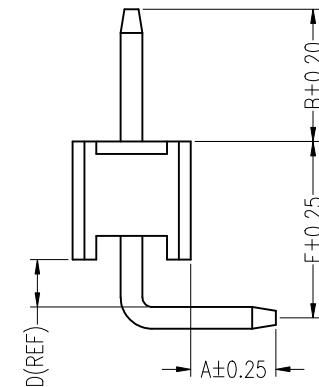
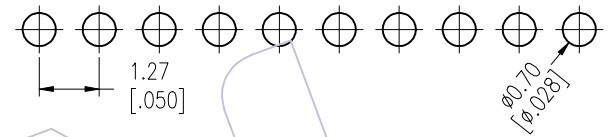
Pin Length  
 L(See Table)

Type:  
 R=R/A

Item	Pin Length	A	D	E	B	Mating
Standard	9.5	3.00	1.0	3.73	2.0	2321/2320T
	10.5				3.0	2334/2344/2346
	11.0				3.5	2357
	12.0				4.5	2345/2385
Standard	8.5	2.0 (THR)	1.0	3.73	2.0	2321/2320T
	9.5				3.0	2334/2344/2346
	10.0				3.5	2357
	11.0				4.5	2345/2385
Alternate						



Recommended P.C.B Layout (Top Side)  
 (PCB BOARD TOLERANCE ±0.05)  
 (PCB Thickness: T=1.60m)



REV	DATE	MODIFICATION DESCRIPTION	CHANGE	OPERATION	DRAW	DATE	SCALE	Fit	PART NO.
A2	2025/09/03	Standardization Drawing	CP	x.X ±0.40	CP	2025/09/03	UNIT	mm [inch]	1325-11XXXXRXXXCXXX $\triangle A2$
A1	2018/01/18	MODIFY PART NO.	William Chen	x.XX ±0.25	CHECK	2025/09/03	SIZE	A4	TITLE: 1.27 Pin Header, SINGLE ROW, R/A, CONCAVE BENDING, H=2.5
AO	2012/03/31	NEW	William Chen	x.XXX ±0.15	TANG		SHEET	1/2	Customer NO.
				Angle ± 3'	APPROVE	2025/09/03	PROJ.		
				DIM TOL	Steven Zhao				

**WCON**  
 Http: www.wcon.com

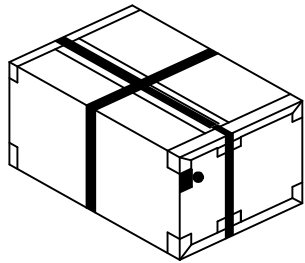
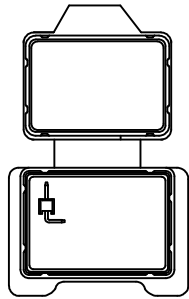
WCON-Dongguan  
 Tel: +86 769 85358920  
 Fax: +86 769 85358915  
 E-mail: sales@wcon.com

WCON-Kunshan  
 Tel: +86 512 57468408  
 Fax: +86 512 57468468  
 E-mail: salesks@wcon.com

# HSF

$\triangle A2$   
Packing:

Tray:



Box

## Packaging Quantity Refers To The Following Table

PINS	Q' ty/Tray (L $\leq$ 9.5)	Q' ty/Box	PINS	Q' ty/Tray (L $\leq$ 9.5)	Q' ty/Box	PINS	Q' ty/Tray (9.5<L $\leq$ 11.5)	Q' ty/Box	PINS	Q' ty/Tray (9.5<L $\leq$ 11.5)	Q' ty/Box	PINS	Q' ty/Tray (L>11.5)	Q' ty/Box	PINS	Q' ty/Tray (L>11.5)	Q' ty/Box
1	2,000	96,000	26	200	9,600	1	2,000	96,000	26	150	7,200	1	1,000	48,000	26	150	7,200
2	2,000	96,000	27	200	9,600	2	1,500	72,000	27	150	7,200	2	800	38,400	27	150	7,200
3	2,000	96,000	28	200	9,600	3	1,000	48,000	28	150	7,200	3	800	38,400	28	150	7,200
4	1,000	48,000	29	200	9,600	4	800	38,400	29	150	7,200	4	700	33,600	29	150	7,200
5	1,000	48,000	30	200	9,600	5	800	38,400	30	150	7,200	5	700	33,600	30	150	7,200
6	1,000	48,000	31	150	7,200	6	500	24,000	31	150	7,200	6	700	33,600	31	150	7,200
7	800	38,400	32	150	7,200	7	500	24,000	32	150	7,200	7	700	33,600	32	150	7,200
8	800	38,400	33	150	7,200	8	500	24,000	33	150	7,200	8	500	24,000	33	150	7,200
9	400	19,200	34	150	7,200	9	500	24,000	34	150	7,200	9	500	24,000	34	150	7,200
10	800	38,400	35	150	7,200	10	400	19,200	35	150	7,200	10	500	24,000	35	150	7,200
11	800	38,400	36	150	7,200	11	400	19,200	36	100	4,800	11	200	9,600	36	100	4,800
12	500	24,000	37	150	7,200	12	300	14,400	37	100	4,800	12	200	9,600	37	100	4,800
13	500	24,000	38	150	7,200	13	300	14,400	38	100	4,800	13	200	9,600	38	100	4,800
14	500	24,000	39	150	7,200	14	300	14,400	39	100	4,800	14	200	9,600	39	100	4,800
15	500	24,000	40	150	7,200	15	300	14,400	40	100	4,800	15	200	9,600	40	100	4,800
16	500	24,000	41	70	3,360	16	250	12,000	41	60	2,880	16	200	9,600	41	50	2,400
17	300	14,400	42	70	3,360	17	250	12,000	42	60	2,880	17	200	9,600	42	50	2,400
18	300	14,400	43	70	3,360	18	200	9,600	43	50	2,400	18	200	9,600	43	50	2,400
19	300	14,400	44	70	3,360	19	200	9,600	44	50	2,400	19	200	9,600	44	50	2,400
20	300	14,400	45	60	2,880	20	200	9,600	45	50	2,400	20	200	9,600	45	50	2,400
21	300	14,400	46	60	2,880	21	200	9,600	46	50	2,400	21	200	9,600	46	50	2,400
22	200	9,600	47	60	2,880	22	200	9,600	47	50	2,400	22	200	9,600	47	50	2,400
23	200	9,600	48	60	2,880	23	200	9,600	48	50	2,400	23	200	9,600	48	50	2,400
24	200	9,600	49	60	2,880	24	200	9,600	49	50	2,400	24	200	9,600	49	50	2,400
25	200	9,600	50	60	2,880	25	200	9,600	50	50	2,400	25	200	9,600	50	50	2,400

				OPERATION	DRAW	DATE	SCALE	Fit	PART NO.	 <a href="http://www.wcon.com">Http: www.wcon.com</a> WCON-Dongguan Tel: +86 769 85358920 Fax: +86 769 85358915 E-mail: sales@wcon.com WCON-Kunshan Tel: +86 512 57468408 Fax: +86 512 57468468 E-mail: salesks@wcon.com
A2	2025/09/03	Standardization Drawing	CP	x.X $\pm 0.40$	CP	2025/09/03	UNIT	mm [inch]	1325-11XXXXRXXXCXXX $\triangle A2$	
A1	2018/01/18	MODIFY PART NO.	William Chen	x.XX $\pm 0.25$	CHECK	DATE	SIZE	A4	TITLE:	
AO	2012/03/31	NEW	William Chen	x.XXX $\pm 0.15$	TANG	2025/09/03	SHEET	2/2	1.27 Pin Header, SINGLE ROW, R/A, CONCAVE BENDING, H=2.5	
REV	DATE	MODIFICATION DESCRIPTION	CHANGE	Angle $\pm 3'$	APPROVE	DATE	PROJ.		Customer NO.	
				DIM TOL	Steven Zhao	2025/09/03				