

HSF

NOTES:

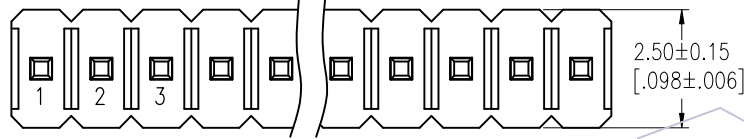
- Rated Current: 1.5AMP.(20°C, 1*2P-1*15P)
1.0AMP.(20°C, 1*16P-1*50P) $\triangle A2$
- Contact Resistance: 20m Ω Max.
- Withstand Voltage: 500V AC/DC
- Insulation Resistance: 1000M Ω Min.
- Operation Temperature: -40°C to +125°C (Gold Plating)
-40°C to +105°C (Tin Plating) $\triangle A2$
- Contact Material: Copper Alloy
- Contact Plating: Au or Sn Over 30u" Min Ni
- Insulator Material: PA9T+G.F UL94V-0 BK $\triangle A2$

Ordering Information

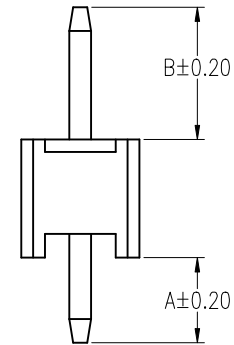
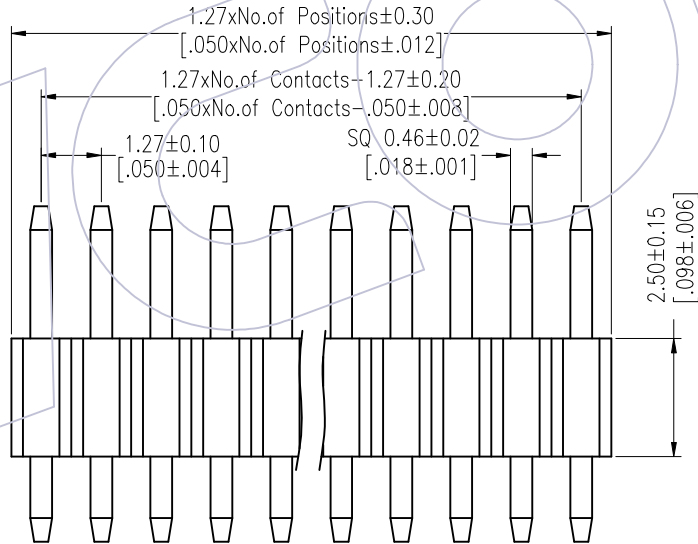
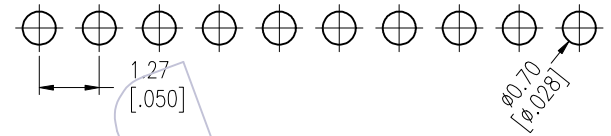
1325-1 1 XX XX S XXX C A XX

- Plastic Layer
- Plastic Row
- No. of Pins
- Per Row: 02-50
- Contact Plating
- G0=Gold Flash
- G3=10u"Au, BG3=8u"PdNi+2u"Au
- G4=15u"Au, BG4=13u"PdNi+2u"Au
- G5=30u"Au, BG5=28u"PdNi+2u"Au
- S0=Gold Flash/Tin
- S3=10u"Au/Sn, P3=8u"PdNi+2u"Au/Sn
- S4=15u"Au/Sn, P4=13u"PdNi+2u"Au/Sn
- S5=30u"Au/Sn, P5=28u"PdNi+2u"Au/Sn $\triangle A2$
- SN=Bright Tin
- SM=Matte Tin
- Series No. 01-99
- Packing A=Tray
- Insulator Material C=PA9T(Standard)
- Pin Length L(See Table)
- Type: S=S/T

Item	Pin Length	A	B	Mating
Standard	7.5	3.00	2.0	2321/2320T
	8.5		3.0	2334/2344/2346
	9.0		3.5	2357
	10.0		4.5	2345/2385
Standard	6.5	2.0 (THR)	2.0	2321/2320T
	7.5		3.0	2334/2344/2346
	8.0		3.5	2357
	9.0		4.5	2345/2385
Alternate				



Recommended P.C.B Layout (Top Side)
(PCB BOARD TOLERANCE±0.05)
(PCB Thickness:T=1.60m)



REV	DATE	MODIFICATION DESCRIPTION	CHANGE	OPERATION	DRAW	DATE	SCALE	Fit	PART NO.
A2	2025/09/02	Standardization Drawing	CP	x.X ±0.40	CP	2025/09/02	UNIT	mm [inch]	1325-11XXXXXXXCXXX $\triangle A2$
A1	2018/01/18	MODIFY PART NO.	William Chen	x.XX ±0.25	CHECK	DATE	SIZE	A4	TITLE:
AO	2012/03/31	NEW	William Chen	x.XXX ±0.15	TANG	2025/09/02	SHEET	1/2	1.27 Pin Header, SINGLE ROW, S/T, H=2.5
				Angle ± 3'	APPROVE	DATE	PROJ.	ϕ	Customer NO.
				DIM TOL	Steven Zhao	2025/09/02			

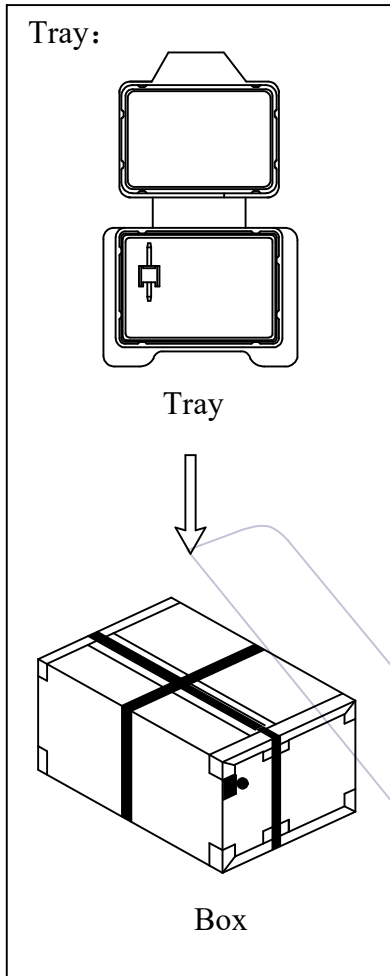
WCON
Http: www.wcon.com

WCON-Dongguan Tel: +86 769 85358920 Fax: +86 769 85358915 E-mail: sales@wcon.com
WCON-Kunshan Tel: +86 512 57468408 Fax: +86 512 57468468 E-mail: salesks@wcon.com

HSF

Packaging Quantity Refers To The Following Table

Packing:



PINS	Q' ty/Tray (L≤8.5)	Q' ty/Box
1	2,500	120,000
2	2,000	96,000
3	2,000	96,000
4	1,500	72,000
5	1,000	48,000
6	1,000	48,000
7	800	38,400
8	800	38,400
9	500	24,000
10	500	24,000
11	500	24,000
12	500	24,000
13	500	24,000
14	500	24,000
15	300	14,400
16	300	14,400
17	300	14,400
18	300	14,400
19	300	14,400
20	250	12,000
21	250	12,000
22	250	12,000
23	250	12,000
24	250	12,000
25	200	9,600

PINS	Q' ty/Tray (L≤8.5)	Q' ty/Box
26	200	9,600
27	200	9,600
28	200	9,600
29	200	9,600
30	200	9,600
31	200	9,600
32	200	9,600
33	200	9,600
34	200	9,600
35	200	9,600
36	200	9,600
37	200	9,600
38	200	9,600
39	150	7,200
40	150	7,200
41	50	2,400
42	50	2,400
43	50	2,400
44	50	2,400
45	50	2,400
46	50	2,400
47	50	2,400
48	50	2,400
49	50	2,400
50	50	2,400

PINS	Q' ty/Tray (8.5<L≤10.8)	Q' ty/Box
1	2,000	96,000
2	2,000	96,000
3	2,000	96,000
4	1,000	48,000
5	1,000	48,000
6	800	38,400
7	600	28,800
8	500	24,000
9	500	24,000
10	500	24,000
11	500	24,000
12	300	14,400
13	300	14,400
14	300	14,400
15	300	14,400
16	300	14,400
17	300	14,400
18	300	14,400
19	300	14,400
20	250	12,000
21	250	12,000
22	250	12,000
23	250	12,000
24	250	12,000
25	250	12,000

PINS	Q' ty/Tray (8.5<L≤10.8)	Q' ty/Box
26	200	9,600
27	200	9,600
28	200	9,600
29	200	9,600
30	200	9,600
31	200	9,600
32	200	9,600
33	200	9,600
34	200	9,600
35	200	9,600
36	150	7,200
37	150	7,200
38	150	7,200
39	150	7,200
40	150	7,200
41	50	2,400
42	50	2,400
43	50	2,400
44	50	2,400
45	40	1,920
46	40	1,920
47	40	1,920
48	40	1,920
49	40	1,920
50	40	1,920

REV	DATE	MODIFICATION DESCRIPTION	CHANGE	OPERATION	DRAW	DATE	SCALE	Fit	PART NO.	 Http: www.wcon.com WCON-Dongguan Tel: +86 769 85358920 Fax: +86 769 85358915 E-mail: sales@wcon.com WCON-Kunshan Tel: +86 512 57468408 Fax: +86 512 57468468 E-mail: sales@wcon.com
A2	2025/09/02	Standardization Drawing	CP	x.X ±0.40	CP	2025/09/02	UNIT	mm [inch]	1325-11XXXXXXXCXXX 	
A1	2018/01/18	MODIFY PART NO.	William Chen	x.XX ±0.25	CHECK	2025/09/02	SIZE	A4	TITLE: 1.27 Pin Header, SINGLE ROW, S/T, H=2.5	
AO	2012/03/31	NEW	William Chen	x.XXX ±0.15	TANG		SHEET	2/2	Customer NO.	
				Angle ± 3'	APPROVE	DATE	PROJ.			
				DIM TOL	Steven Zhao	2025/09/02				