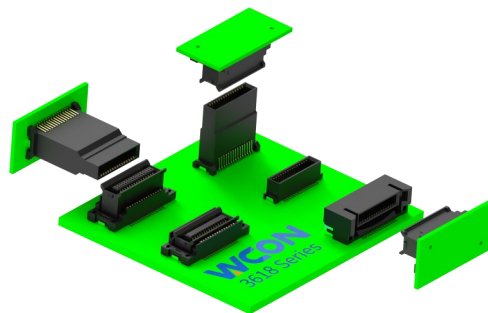


0.80mm (0.032")pitch,compact size connector for automotive/industrial application
0.80毫米（0.032英寸）间距，适用于汽车/工控应用的紧凑型汽车连接器

Overview

The 3618 series with 0.80mm pitch is a high-density, high-performance board-to-board connector featuring floating capability in the X, Y and Z axes. It offers a wide range of product specifications to provide signal transmission for equipment.



概述

0.80毫米间距的3618系列是一款高密度、高性能的板对板连接器，可在X、Y、Z轴方向浮动，提供丰富多样的产品规格选择，为设备提供信号传输。

Features and Benefits

- Capable of achieving three-axis floating motion in the X, Y, and Z planes
- Line-up of Right angle, Parallel (Stacking) type and variety of height, so it can be freely designed.
- Positioning pillar design, ensuring precise positioning on the circuit board

特点与优势

- 可实现X、Y、Z三轴浮动
- 提供直角型、平行（堆叠）型及多种高度规格，可自由设计布局
- 定位柱设计、确保在电路板精准定位

Product Applications

- Automotive: Radar, ECU, Infotainment
- Industrial: Servo drives, PLCs, Robotics

应用领域

- 汽车：雷达、ECU、娱乐影音
- 工业：伺服驱动、PCL、机器人

Standard 标准

- QC/T 1067
- GB/T 5095
- IEC 60068

UL certification UL认证

- E248993

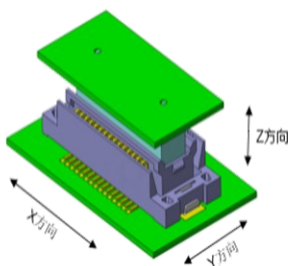
Material 材料

| Part/零件 | Material/材料 | Finish/电镀 | UL Flame retardant/阻燃等级 |
|-------------|-----------------------------------|-------------------|-------------------------|
| Housing/主体 | PA46 (Socket 插座) LCP (Plug 插头) | Black/黑色 | UL94V-0 |
| CAP/夹持盖 | LCP | Black/黑色 | UL94V-0 |
| Terminal/端子 | Copper alloy | Plated Gold 镀金 | - |
| Forlock/固定片 | Copper alloy | Plated Tin 镀锡 | - |

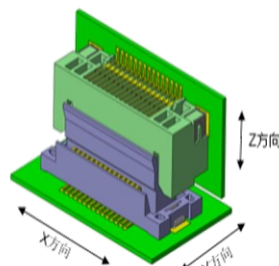
Production Specifications 产品规格

| | | | |
|------------------------|-------|----------------------------------------------------------------------------------------------------------|----------------------------------------------|
| Current rating 额定电流 | 0.5 A | Operating Temperature Range:-40° C~+105° (including temperature rise) Operating Humidity Range:20-80% | Storage Teroerature:25±5° C Humidity:≤60% |
| Voltage rating 额定电压 | 50V | 工作温度范围: -40° C~+105° C(含温升) 工作湿度范围: 20-80% | 储存温度: 25±5° C 储存湿度: ≤60% |

| Item 项目 | Condition 条件 | Specification 规格 |
|------------------------------------------|----------------------------------------------------------------------------------------------------------------|------------------------------------------------------------------------------------------------------------------------------------|
| Insulation Resistance 绝缘电阻 | Measured at 500V DC for 1 minute 测试电压: 500V DC/1分钟 | No less than 100M Ω 不少于100MΩ |
| Withstanding voltage 耐电压 | Measured at 250V AC for 1 minute 测试电压: 250V AC/1分钟 | No breakdown, no discharge, leakage current <1mA 无击穿、无放电、漏电流<1 mA |
| Contact Resistance 接触电阻 | Test Voltage 测试电压: 20mV Max Test current 测试电流: 100mA Max | Contact resistance: Initial value/ 100 mo max After environmental tests/ 120 mo max. 接触电阻: 初始值 100 mΩ 以下 测试后 120 mΩ 以下 |
| Vibration Resistance 抗振动 | Frequency : 60~ 1200 Hz Duration: 8H /axis Vibration: X/Y/Z 频率: 60 ~ 1200 Hz 时长: 8H/轴 方向: X/Y/Z | No electrical discontinuity of 1μsorgreater 试验过程中未发生1μs瞬断现象, 且外观无损伤, 电气性能正常 |
| Temperature life 高温老化 | Temperature 温度: 125°C Duration 时间: 1008H | Contact resistance: Initial value/ 100 mo max After environmental tests/ 120 mo max. 接触电阻: 初始值 100 mΩ 以下 测试后 120 mΩ 以下 |
| Salt Spray 盐雾 | Mated connectors to 5% salt Time: Au: 48H 配对连接器 5% 盐浓度 测试时间: 镀金48H | Contact resistance: Initial value/ 100 mo max After environmental tests/ 120 mo max. 接触电阻: 初始值 100 mΩ 以下 测试后 120 mΩ 以下 |
| Durability(Mating/un- mating) 插拔寿命 | Rate:50mm/Min 100 cycles 速度: 50mm/分钟 循环100次 | Contact resistance: Initial value/ 100 mo max After environmental tests/ 120 mo max. 接触电阻: 初始值 100 mΩ 以下 测试后 120 mΩ 以下 |



Vertical connection type
垂直连接

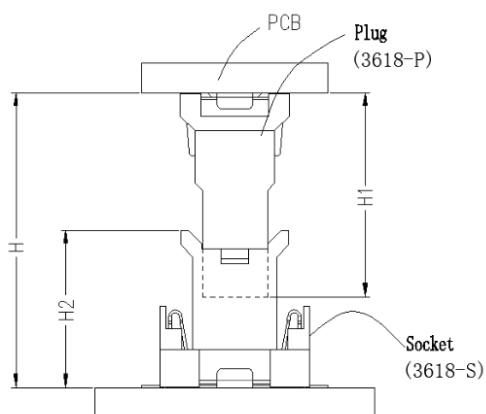


Horizontal connection type
水平连接

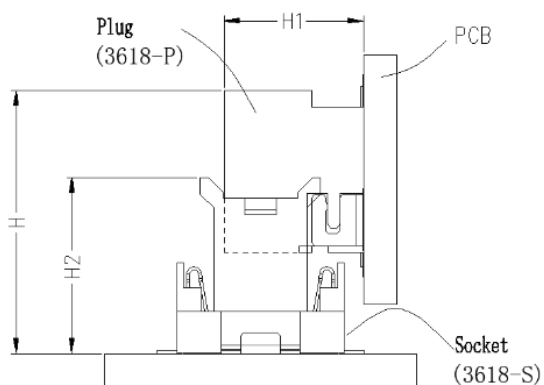
| Axes | Floating range(mm) |
|------|--------------------|
| +X | 0.60 |
| -X | 0.60 |
| +Y | 0.60 |
| -Y | 0.60 |
| +Z | 0.50 |
| -Z | 0.50 |

3618 Series

Available Stacking heights 可用堆叠高度



Vertical connection type
垂直连接



Horizontal connection type
水平连接

Vertical connection type 垂直连接

| Socket (H2) | Plug (H1) | Stacking (H) |
|-------------|-----------|--------------|
| 4.95 | 4.80 | 6.25 |
| | 6.80 | 8.25 |
| | 7.80 | 9.25 |
| | 10.95 | 12.40 |
| | 13.05 | 14.50 |
| | 14.55 | 16.00 |
| | 15.80 | 17.25 |
| 19.75 | 21.20 | |

| Socket (H2) | Plug (H1) | Stacking (H) |
|-------------|-----------|--------------|
| 8.45 | 4.80 | 9.75 |
| | 6.80 | 11.75 |
| | 7.80 | 12.75 |
| | 10.95 | 15.90 |
| | 13.05 | 18.00 |
| | 14.55 | 19.50 |
| | 15.80 | 20.75 |
| 19.75 | 24.70 | |

Vertical connection type 水平连接

| Socket (H2) | Plug (H1) | Stacking (H) |
|-------------|-----------|--------------|
| 8.45 | 6.70 | 11.85 |

Order Information 订购信息

| Part Number 料号 | Height (mm) 高度 | TYPE 形态 | Circuits 位数 | | | | | | | | | | |
|---------------------|----------------------|-----------------|-------------|----|----|----|----|----|----|-----|-----|-----|---|
| | | | 30 | 40 | 50 | 60 | 70 | 80 | 90 | 100 | 110 | 120 | |
| 3618-SXXX-049MG*R0X | 4.95 | Socket vertical | √ | √ | √ | √ | √ | √ | √ | √ | √ | √ | √ |
| 3618-SXXX-084MG*R0X | 8.45 | Socket vertical | √ | √ | √ | √ | √ | √ | √ | √ | √ | √ | √ |
| 3618-PXXX-048MG*R0X | 4.80 | Plug vertical | √ | √ | √ | √ | √ | √ | √ | √ | √ | √ | √ |
| 3618-PXXX-068MG*R0X | 6.80 | Plug vertical | √ | √ | √ | √ | √ | √ | √ | √ | √ | √ | √ |
| 3618-PXXX-078MG*R0X | 7.80 | Plug vertical | √ | √ | √ | √ | √ | √ | √ | √ | √ | √ | √ |
| 3618-PXXX-109MG*R0X | 10.95 | Plug vertical | √ | √ | √ | √ | √ | √ | √ | √ | √ | √ | √ |
| 3618-PXXX-130MG*R0X | 13.05 | Plug vertical | √ | √ | √ | √ | √ | √ | √ | √ | √ | √ | √ |
| 3618-PXXX-145MG*R0X | 14.55 | Plug vertical | √ | √ | √ | √ | √ | √ | √ | √ | √ | √ | √ |
| 3618-PXXX-158MG*R0X | 15.80 | Plug vertical | √ | √ | √ | √ | √ | √ | √ | √ | √ | √ | √ |
| 3618-PXXX-197MG*R0X | 19.75 | Plug vertical | √ | √ | √ | √ | √ | √ | √ | | | | |
| 3618-PXXX-067ZG*R0X | 6.70 | Plug horizontal | √ | √ | √ | √ | √ | √ | √ | √ | √ | √ | √ |

3618 Series

Model Numbering 型号命名

| | | | | | | | | | |
|---------------------------------------------------------------------------------------------------------------------------|---|----------|------------|---|----------------------------------------------------------------------------|----------|-----------|----------|-----------|
| 3618 | - | P | XXX | - | XXX | M | XX | R | XX |
| (1) | | (2) | (3) | | (4) | (5) | (6) | (7) | (8) |
| (1) Series (系列): 0.80mm Board to Board Series | | | | | (5) Product Type(产品型态): M=S/T SMT、Z=R/A SMT | | | | |
| (2) Product type (产品类型): P=Plug | | | | | (6) Contact Plating(电镀): G1=3U"Gold G3=10U"Gold G4=15U"Gold G5=30U"Gold | | | | |
| (3) Positions (位数): 030=30.....120=120P | | | | | (7) Packing (包装): R=Reel | | | | |
| (4) Housing Height (塑胶高度): 0.48=4.80、0.67=6.80 078=7.80、109=10.95、130=13.05、145=14.55、 158=15.80、197=19.75、067=6.70 | | | | | (8) Running Number (流水码): 01=With Post 02=Without Post | | | | |

| | | | | | | | | | |
|------------------------------------------------|---|----------|------------|---|----------------------------------------------------------------------------|----------|-----------|----------|-----------|
| 3618 | - | S | XXX | - | XXX | M | XX | R | XX |
| (1) | | (2) | (3) | | (4) | (5) | (6) | (7) | (8) |
| (1) Series (系列): 0.80mm Board to Board Series | | | | | (5) Product Type(产品型态): M=S/T SMT、Z=R/A SMT | | | | |
| (2) Product type (产品类型): S=Socket | | | | | (6) Contact Plating(电镀): G1=3U"Gold G3=10U"Gold G4=15U"Gold G5=30U"Gold | | | | |
| (3) Positions (位数): 030=30.....120=120P | | | | | (7) Packing (包装): R=Reel | | | | |
| (4) Housing Height (塑胶高度): 0.49=4.95、0.84=8.45 | | | | | (8) Running Number (流水码): 01=With Post 02=Without Post | | | | |

Contact Us 联系我们

维峰电子股份有限公司(总部)
WCON ELECTRONICS CO.,LTD(HQ)
地址:广东省东莞市虎门镇大宁文明路15号
Add :No.15,Wenming Road,Daning Community, Humen Town,
Dongguan, Guangdong.523930, China

昆山维康电子有限公司
KUNSHAN WCON ELECTRONICS CO.,LTD(East of China)
地址:昆山市千灯镇汶浦中路169号
Add : No.169, WenPu Middle Road, QianDeng Town, Kunshan
City, Jiangsu Province, China

合肥维峰电子有限公司
HEFEI WCON ELECTRONICS CO.,LTD
地址:安徽合肥市高新技术开发区绿城科技园E栋2楼
Add : 2F, Building E, Greentown Science Park,High-tech Development Zone, Hefei, Anhui,China

维康电子(泰国)有限公司
WCON ELECTRONICS (Thailand) CO.,LTD
地址:泰国巴真武里府西玛铺县华瓦区洛加纳工业园
Add: VG3C+H57, Hua Wa, Si Maha Phot District, Prachin Buri
25140, Thailand

销售联系方式 Contacts Information

国际客户部 International sales department
salesdg01@wcon.com
salesdg05@wcon.com

大客户专线 Major customer dedicated department

华南: salesdg28@wcon.com
华东: salesks@wcon.com

中小客户专线 Public Customer hot line

华南: salesdg10@wcon.com
华东: salesks01@wcon.com

网络销售 Online sales department

salesdg26@wcon.com



Official Website



Product e-catalog



WeChat Public#



TikTok Public#