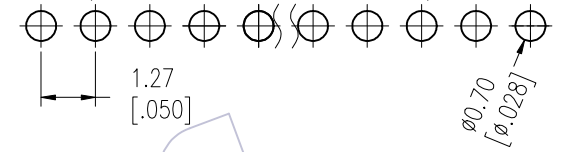


HSF

NOTES: $\triangle A1$
 Rated Current: 1.5AMP.(20°C, 1*2P-1*15P)
 1.0AMP.(20°C, 1*16P-1*50P)
 Contact Resistance: 20m Ω Max.
 Withstand Voltage: 500V AC/DC
 Insulation Resistance: 1000M Ω Min.
 Operation Temperature: -40°C to +125°C(Gold Plating)

Contact Material: Copper Alloy
 Contact Plating: Au Over 30u" Min Ni
 Insulator Material: PA9T+G.F UL94V-0 BK

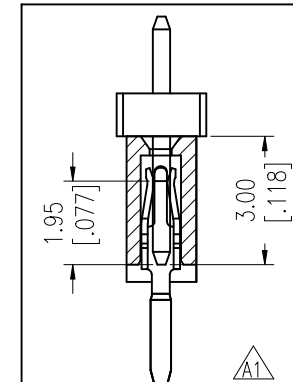
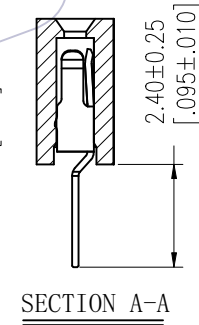
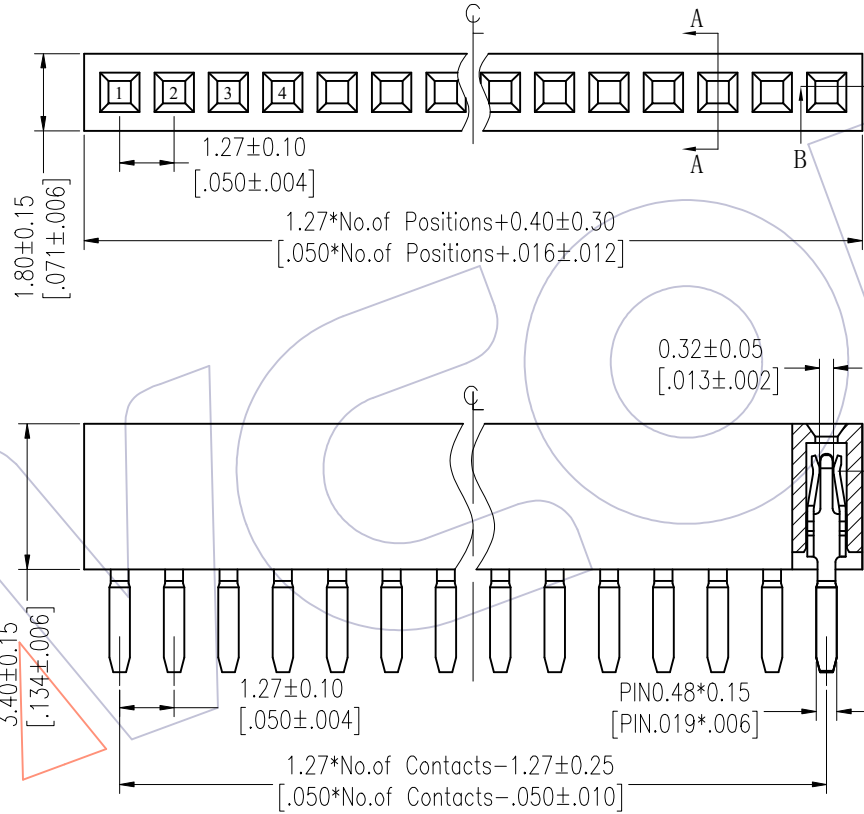
Recommended P.C.B Layout(Top Side)
 (PCB BOARD TOLERANCE ± 0.05)
 (PCB Thickness: T=1.60mm)



Ordering Information $\triangle A1$

2334-1 XX S XX C U N T 1

Plastic Row
 No. of Pins Per Row: 02-50
 Welding Type S=S/T
 Contact Plating
 G0=Gold Flash
 G3=10u"Au, BG3=8u"PdNi+2u"Au
 G4=15u"Au, BG4=13u"PdNi+2u"Au
 G5=30u"Au, BG5=28u"PdNi+2u"Au
 Packing: T=Tube
 Logo N=W/O Logo
 Contact Type U=U Type
 Insulator Material C=PA9T




Item	Pitch	Mating	DIM.B
Standard	1.27	1310/1315/1320	3.00
Alternate			

REV	DATE	MODIFICATION DESCRIPTION	CHANGE	OPERATION	DRAW BAO	DATE	SCALE	FIT	PART NO.
A1	2026/01/14	Standardization Drawing	BAO	x.X ±0.40	CHECK TANG	2026/01/14	UNIT mm	A4	2334-1XXSXXCUNT1
AO	2012/07/06	NEW	-----	x.XX ±0.25	APPROVE Steven Zhao	2026/01/14	SIZE A4	1/2	TITLE: 1.27mm SINGLE FEMALE HEADER 180° H=3.40
				x.XXX ±0.15			SHEET 1/2		Customer NO.
				Angle ± 3'			PROJ.		
				DIM TOL					

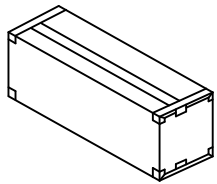
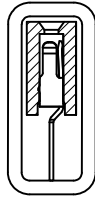
WCON
 Http: www.wcon.com
 WCON-Dongguan Tel: +86 769 85358920
 WCON-Kunshan Tel: +86 512 57468408
 Fax: +86 769 85358915
 Fax: +86 512 57468468
 E-mail: sales@wcon.com
 E-mail: salesks@wcon.com

HSF

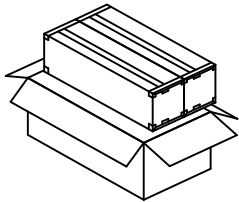
Packaging Quantity Refers To The Following Table

Packing: 

Tube:




Inner Box



Box

PINS	Q' ty/Tube	Q' ty/Inner Box	Q' ty/Box
2	2,000/Tray	/	96,000
3	137	32,880	65,760
4	105	25,200	50,400
5	85	20,400	40,800
6	72	17,280	34,560
7	62	14,880	29,760
8	54	12,960	25,920
9	49	11,760	23,520
10	44	10,560	21,120
11	40	9,600	19,200
12	37	8,880	17,760
13	34	8,160	16,320
14	31	7,440	14,880
15	29	6,960	13,920
16	28	6,720	13,440
17	26	6,240	12,480
18	24	5,760	11,520
19	23	5,520	11,040
20	22	5,280	10,560
21	21	5,040	10,080
22	20	4,800	9,600
23	19	4,560	9,120
24	18	4,320	8,640
25	18	4,320	8,640
26	17	4,080	8,160

PINS	Q' ty/Tube	Q' ty/Inner Box	Q' ty/Box
27	16	3,840	7,680
28	16	3,840	7,680
29	15	3,600	7,200
30	15	3,600	7,200
31	14	3,360	6,720
32	14	3,360	6,720
33	13	3,120	6,240
34	13	3,120	6,240
35	12	2,880	5,760
36	12	2,880	5,760
37	12	2,880	5,760
38	11	2,640	5,280
39	11	2,640	5,280
40	11	2,640	5,280
41	10	2,400	4,800
42	10	2,400	4,800
43	10	2,400	4,800
44	10	2,400	4,800
45	10	2,400	4,800
46	9	2,160	4,320
47	9	2,160	4,320
48	9	2,160	4,320
49	9	2,160	4,320
50	9	2,160	4,320

REV	DATE	MODIFICATION DESCRIPTION	CHANGE	OPERATION	DRAW	DATE	SCALE	FIT	PART NO.
A1	2026/01/14	Standardization Drawing	BAO	x.X ±0.40	BAO	2026/01/14	UNIT	mm	2334-1XXSXXCUNT1
AO	2012/07/06	NEW	-----	x.XX ±0.25	CHECK	2026/01/14	SIZE	A4	TITLE:
				x.XXX ±0.15	TANG		SHEET	2/2	1.27mm SINGLE FEMALE HEADER 180° H=3.40
				Angle ± 3'	APPROVE	2026/01/14	PROJ.		Customer NO.
				DIM TOL	Steven Zhao				

WCON

Http: www.wcon.com

WCON-Dongguan
Tel: +86 769 85358920
Fax: +86 769 85358915
E-mail: sales@wcon.com

WCON-Kunshan
Tel: +86 512 57468408
Fax: +86 512 57468468
E-mail: salesks@wcon.com